





NATURE INSPIRATION

KRION™ PORCELANOSA SOLID SURFACE	04
KRION™ FOR PLACES WITH STRICT HYGIENE REQUIREMENTS	06
RECOMMENDATIONS OF USE	08
CLEANING INSTRUCTIONS - CLEANING KIT	10
CLEANING SINKS AND BASINS (WHITE)	16
NOTES AND PRECAUTIONS ABOUT CLEANING	16
MAINTENANCE	17

INDEX

KRION[®] PORCELANOSA SOLID SURFACE

KRION[™] is a new generation of solid surface developed by Systempool, a company belonging to Porcelanosa Group. **A material that is warm to the touch with an appearance similar to natural stone, KRION[™] is made of two thirds natural minerals (ATH: alumina trihydrate) and a low percentage of high-resistance resins. This composition ensures exclusive characteristics, such as nil porosity, antibacterial properties without the need for any kind of additive, hardness, resistance, low maintenance and an easy-to-clean surface.**

KRION[™] is worked like wood. This means that the sheets can be cut, joined, and thermoformed to create curved items. KRION[™] can be used in the manufacturing process to make cast objects, allowing for the creation of designs and projects that would be impossible with other materials.

SECTORS

All this makes KRION[™] the perfect choice as a material for a wide variety of sectors including:



HOUSING: Thanks to its exclusive technical properties and aesthetic qualities, KRION[™] is an ideal solution in homes.



DESIGN: KRION[™] can be used to make customized products or in made-to-measure projects.



RESTAURANT & CATERING: KRION[™] generates a sensation of warmth and comfort, perfect for restaurants of all kinds.



COMMERCIAL PREMISES & BUSINESSES: With its large format, broad design potential and wide selection of colours, KRION[™] can be integrated in any setting, regardless of its shape.

APPLICATIONS

The KRION[™] range's numerous different series can be used in a wide variety of applications:



PRODUCTS



OUTDOOR WALL
CLADDING



INDOOR WALL
CLADDING



FURNITURE



TRANSPORT: Its durability, imperviousness, resistance to the elements and to corrosion, and easy adaptability all make KRION™ an unparalleled choice for use in vessels.



PUBLIC & GOVERNMENTAL BUILDINGS: A highly adaptable material, perfect for designing surfaces and products of all kinds or for combining with other materials (ceramic, glass, metal, wood etc.), leading to the creation of settings with a highly distinctive appeal.



HOTELS: Hotel facilities of all kinds can be fitted out with KRION™, from the reception area to hotel rooms, restaurants, spas and gymnasiums.



HEALTHCARE: A warm-looking, seamless, anti-bacterial material that is hygienic, low on maintenance and easily repairable in situ.



RETAIL FURNITURE



KITCHEN COUNTERTOPS



BATHROOM EQUIPMENT



SIGNAGE

KRION™ FOR PLACES WITH STRICT HYGIENE REQUIREMENTS

In the case of kitchen countertops or worktops where contact with food is an important factor or aseptic areas where cleanliness and hygiene are fundamental, KRION™ is a far better choice than other materials, due to its composition and its resulting exclusive properties.

As indicated earlier, **thanks to its nil porosity, anti-bacterial properties with no need for any kind of additives, resistance to stains and chemical substances, and the fact that it can be seamlessly bonded together, KRION® is an unbeatable choice for areas where priority is given to hygiene and healthcare.**

All these properties have been **tested and confirmed through the obtainment of some of the most rigorous health and hygiene certificates:**



GREENGUARD

This certificate, awarded by the Greenguard Environmental Institute, ensures that KRION™ complies with indoor air quality standards regarding volatile organic compounds (VOCs) in terms of the slabs and adhesives. The marks awarded are the “Indoor Air Quality Certification” and the “Children and Schools Certification.”



NSF

NSF Certification (National Science Foundation), recognized body from the United States that acts in the issuance of health, hygiene, and environmental certificates, considers KRION™ as a safe material for its direct contact with all kinds of food, without posing any health risk. See the colours on the official website www.nsf.org



BISFENOL A

Bisphenol A is an organic compound mainly used to make plastics. Following numerous studies, for some years Bisphenol A has been deemed to be possibly harmful to mankind. The continued presence of this compound in organisms has been associated with a higher risk of suffering from different disorders. Different countries are now prohibiting its use, in their legislation, in the manufacture of products that are or might be in contact with food.

Given all the above, we guarantee that no BPA was used to make KRION™, since this chemical compound does not form part of its composition. To check that none of the raw materials used to make it contains BPA, a study was conducted by an authorized external laboratory (study no. 220.I.1508.076. ES.01) which reached the following conclusion: **“No sign of any Bisphenol A was observed”.**



REACH

The REACH regulation governs chemical products in the EU that are manufactured or included as substances in compounds or finished products. Its main aim is to guarantee a high level of protection for human health and for the environment. As part of our ongoing bid to offer customers the best possible, highest quality product on the market and within the framework of our commitment to the environment, tests have been conducted to confirm that KRION™ contains none of the 161 substances mentioned in the last version of the SVCH (Substances of Very High Concern) list published by ECHA (European Chemicals Agency).

In accordance with certificate HKHL1501002788JL, issued by an external laboratory, KRION™ complies with Article 7 “Registration & Notification of Substances Contained in Items” of the REACH Regulation and with the fact that it does not contain any SVCH in a concentration of over 0.1%.



EUROPEAN REGULATION 10/2011

This regulation establishes the specific standards applicable to plastic materials and items aimed at ensuring their safe use when in contact with food products.

In accordance with certificate NV-12-2295-13-581, KRION™ complies with the overall migration limits established in Regulation 10/2011 for contact with all kinds of foods during prolonged storage at atmospheric temperatures or lower and repeated use, including heating up to 70°C for a maximum of 2 hours or up to 100°C for a maximum of 15 minutes.



In addition to cleaning the KRION™ surface, certain recommendations of use should be followed to keep it in optimum condition for longer.



1 AVOID EXCESSIVE HEAT

KRION™ can withstand high temperatures, but extreme heat can damage any surface. **Do not expose it to extreme heat or sources of extreme heat.** Make sure that cooking pots and frying pans do not overhang the edge of cooking hobs.



2 PLACE OBJECTS THAT HAVE BEEN TAKEN OFF THE HOB OR OUT OF THE OVEN ONTO A HEAT RESISTANT MAT.

In the case of kitchen countertops, **put objects that have been taken off the hob or out of the oven onto a heat resistant mat or similar particularly if they are made of cast iron.**



3 DO NOT SLIDE HEAVY OR SHARP OBJECTS ACROSS THE SURFACE

KRION™ is a very hard material. **However, as with any surface, be careful not to slide hard, heavy or sharp-edged objects** across surfaces with a satin or glossy finish. **Always use a chopping board to cut or chop food.**



4 PREVENT OBJECTS FROM KNOCKING THE EDGES OF COUNTERTOPS.

KRION™ has a high resistance to impacts, thanks to its combination of raw materials. **Nonetheless, the edges of KRION™ countertops should not be knocked.** If they are, they can always be repaired by a KRION™ fabricator.



5 DO NOT POUR BOILING LIQUIDS DIRECTLY INTO THE SINK/BASIN

Although KRION™ is resistant to thermal shocks, boiling liquids should not be poured directly into the sink/basin. Wait until they cool or run the cold water at the same time. Do not leave hot recipients on the surface of the sink/basin. Leave them to cool first.



6 DO NOT USE TAPS THAT DISPENSE VERY HOT WATER

Avoid the use of taps that provide instant supplies of very hot water. Such a high change in temperature might burn the person handling the taps and damage the sink/basin. Any damage by these taps to the KRION™ product is excluded from the warranty.



7 DO NOT SPILL NOXIOUS CHEMICAL PRODUCTS ONTO IT

Avoid the use of noxious chemical substances, like drain cleaners or paint stripper. If any such liquid is spilled onto the surface, clean it up as promptly as possible using plenty of soapy water to avoid damage. Do not expose KRION™ surfaces to strong chemical products for prolonged periods of time. Be particularly careful with solvents, acetates, oven cleaners, methyl chloride and drain cleaners. In the event of the surface's accidental exposure to these products, rinse with plenty of water.



All places, whether public or private, require cleaning and care, with the subsequent cost in human effort and cleaning materials for households, companies or public bodies.



A cutting-edge material mainly formulated with natural materials using high-tech manufacturing processes, **KRION™ helps to keep places where it has been fitted clean, aseptic and in perfect condition. This is due to its nil porosity, which prevents bacteria from spreading and allows for the creation of seamless surfaces with no joints or inaccessible corners.** As a result, only minimum care is needed to keep the material in optimum condition.

As well as being easy to clean, KRION™ can swiftly be repaired on site. **This is a huge advantage when compared with other materials,** allowing you to keep your home or work facilities in perfect condition.



REGENERATION



KRION™ is an easy-to-clean material. **Nonetheless, this does not mean that no cleaning is required. Although KRION™ does not absorb liquids due to its lack of pores, stains should be cleaned away immediately when they are swifter and easier to remove.** Whenever the surface is cleaned, it must be dried thoroughly afterwards to prevent lime scale from building up or the remains of detergents and cleaning products.

The following is a detailed procedure to achieve effective cleaning of any kind of stain and it will help to keep the KRION® surface as the first day:



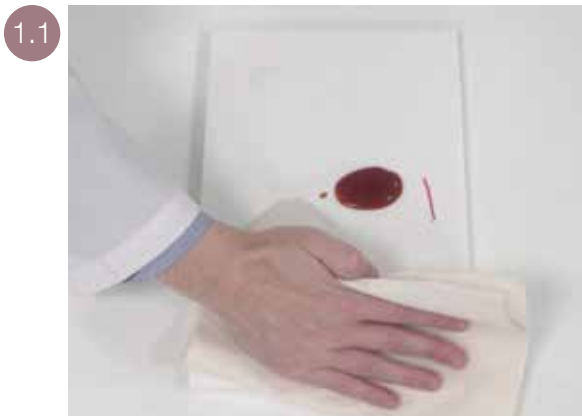
1. White scouring pad
2. Green cleaning cloth
3. Grey drying cloth
4. K-Cleaner 500 ml
5. K-Cream 530 ml

1 THIS CLEANING PROCESS CAN BE PERFORMED USING THE GREEN MICROFIBRE CLOTH, K-CLEANER CLEANER AND HOT WATER

1.1. Before embarking on the cleaning process, wipe away any easily removable part of the stain with water and a cleaning cloth or paper.

1.2. Moisten a green cleaning cloth and apply K-CLEANER to the stain to clean it. Rub it in circular movements, making sure that the whole surface is cleaned in a uniform way.

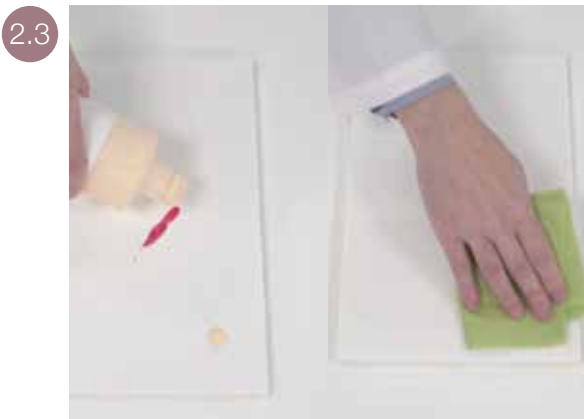
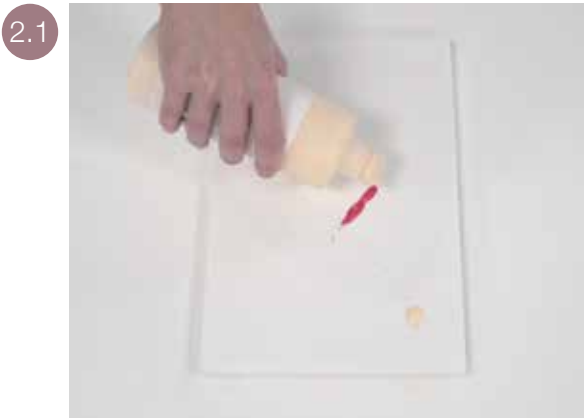
1.3. At the end of the whole cleaning process, the surface must be dried well with a grey drying cloth so that no remains of K-CLEANER are left. Afterwards, the cloths can be washed for later re-use.





2 IF THE STAIN CANNOT BE REMOVED

- 2.1.** Shake the bottle of K-CREAM and apply it directly to the stain in an amount half the size of the latter.
- 2.2.** Moisten a green cleaning cloth and rub the stain in circular movements, taking care not to exert any pressure.
- 2.3.** Once the stain has been removed, K-CREAM can be applied to the area around it and the whole surface cleaned in uniform fashion using a green cleaning cloth.
- 2.4.** Once it has been fully cleaned, any surplus cream must be removed and the surface rinsed and dried well with a grey drying cloth.





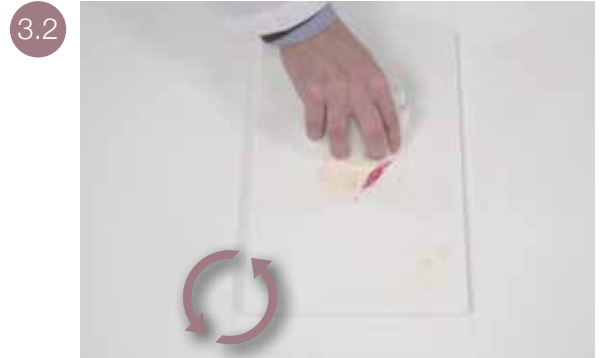
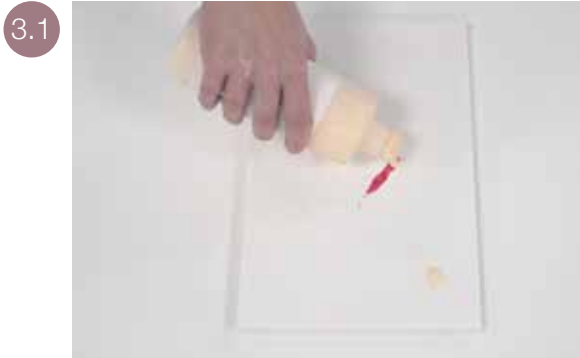
3 FOR MORE THOROUGH CLEANING OR TO REMOVE STAINS THAT PERSIST AFTER CARRYING OUT THE ABOVE STEPS.

3.1. Apply an amount of K-CREAM half the size of the stain to the KRION™ surface and dampen a white scouring pad.

3.2. Rub the stain, using short, energetic, circular movements until it disappears. If necessary, apply a little pressure to the scouring pad to remove the stain more easily.

3.3. Once it has been fully cleaned, any surplus cream must be removed and the surface rinsed and dried well with a grey drying cloth.

If there is any difference in comparison with the finish of the surrounding area, repeat the previous step but gradually cover a broader area until there is no noticeable difference in the finish.





4

SUMMARIZED TABLE

Type of stain	Cleaning element	Cleaning product
Common stain or everyday cleaning	Cloth, sponge or microfibre cleaning towel	K-CLEANER
Tough stain	Cloth, sponge or microfibre cleaning towel	K-CREAM
Oil, wine, coffee, milk, tomato, ketchup, sauces, curry, remains of food, tea, juice, fizzy drinks, alcoholic drinks	White scouring pad	K-CLEANER / K-CREAM
Lime scale, soap, toothpaste.	White scouring pad	K-CREAM
Dye, iodine, pencil, indelible pen, lipstick, cigarette burns, ink, nail varnish	White scouring pad	K-CREAM
Mould, remains of food, and food stains that have not been cleaned away for a long time	White scouring pad	K-CREAM
Uncommon stains, shown in this list	White scouring pad	K-CREAM



The following is a detailed procedure to achieve effective cleaning of any kind of stain and it will help to keep the KRION® surface as the first day:



THOROUGH CLEANING

To keep **your washbasin/sink in optimum condition, it should be thoroughly cleaned from time to time.**

For this purpose, using circular movements, rub it with a damp cloth and a cream-based cleaner with slightly abrasive microparticles. For more persistent stains, rub it in circular motion with a cream-based cleaner with slightly abrasive microparticles and a white microfibre scouring pad. Finally, dry the surface thoroughly and your washbasin/sink will be as good as new.



DEPTH CLEANING

Once a month your washbasin/sink should be given a total clean.

For this purpose, apply a cream-based cleaner with bleach to the whole of the surface and leave it overnight (approx. 12 hours). Next day, rinse it with plenty of water and rub it with a damp cloth. Finally, dry the surface thoroughly and your washbasin/sink will be as good as new. **Do not leave the bleach in contact with the surface for longer than indicated as it may leave marks on it.**



NOTA: For sinks/basins made from KRION™ sheets, follow the cleaning instructions for KRION™ surfaces (pag.10).



Do not use strong acid-based cleaners like hydrochloric acid or drain cleaners. Neither should acetate-based or industrial cleaning products or solvents be used. If one of these products is accidentally spilt onto the KRION™ surface, rinse it off immediately with plenty of water and clean the washbasin/sink thoroughly (point 2) to avoid damage. In the event of damage, the washbasin/sink can always be restored to its former condition through special repair methods.

This consists of the surface's partial restoration, which you can do yourself by consulting the KRION™ Restoration Technical Note or by contacting a K® Associate Quality Fabricator for them to restore it fully on prior submission of a quote.





1 KRION™ is an easy-to-clean material that only requires minimum care, thanks to its exclusive properties:



A HIGH MINERAL CONTENT



HIGHLY RESISTANT TO CHEMICAL ATTACK



SEAMLESS



EASY TO CLEAN



THERMOFORMABLE



FOOD GRADE



NON POROUS / HYGIENIC



REGENERATION

2 Remove stains from KRION™ surfaces as soon as they occur when they are still easy to clean away.

3 If the KRION™ is accidentally damaged, remember that it can be repaired or restored.

4 In the event of a query about how to care for your KRION™ surface, contact a K® Associate Quality Fabricator or the KRION™ Customer Care Service.





SYSTEMPOOL, S.A. - Ctra. Villarreal-Puebla de Arenoso, Km 1 / P.O. Box 372 - 12.540 VILLARREAL (Castellón) - SPAIN
Tel:+34 964 50 64 64 - Fax Nac. 964 50 64 81 - Fax Exp. +34 964 50 64 80 / E-mail: krion@krion.com
www.krion.com